

Surakari Virgo Missile Frigate Assembly Instructions

Box Contents

- One Surakari Virgo Hull, Turret, and Base
- One Flight Peg and Flight Peg Topper

Assembly Instructions

For each of the types of figures, there are two pictures. The first picture shows the figures un-assembled and the second picture shows the complete figure. Each figure in this kit contains one 3D printed hull and one 3D Printed Turret. Before assembling the miniature, extra 3D printed support material needs to be removed with clippers and a file. See the image below for examples of this support material. They are highlighted in blue. The exact location of the support material will vary from miniature to miniature. Please note the small bump in the top middle of the miniature is not a support point. It is the attachment point for the turret.



Be sure to use proper safety equipment when assembling these figures. Required tools include clippers, a file, and cyanoacrylate glue.

Completed and Painted Surakari Virgo

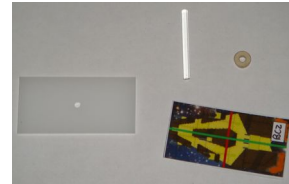


Base Assembly Instructions

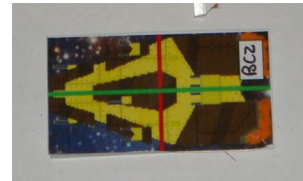
Once the figures have been assembled and painted, they need to be attached to their flight bases. It should be noted that depending on your method of figure storage, it may be recommended to not glue the figures to the flight bases. An optional upgrade is to attach the miniature to the flight stand with magnets. This allows the miniature to rotate around in battle and helps reflect the warship's combat arc during gameplay.

Assembling the Flight Bases

Each flight base contains a base, a flight peg, and a flight peg topper. The token for the Surakari Virgo is available in the **Surakari Fleet Pack**. The size of the bases will match the size of the game tokens. Battle Cruisers use the 1.5" flight peg and all other ships use the 1" flight peg. (Please note that figure images used here may not match the included figures)



Trim the token down to the size of the base and glue the token to the top of the base.



Punch a hole through the token so that the flight peg can be inserted into the base. The base of the flight peg might need to be filed a little bit in order to fit.



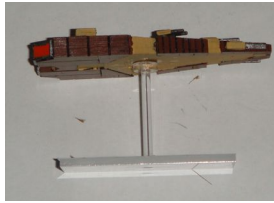
Slide the flight peg topper down the flight peg, but do not glue it in place.



If desired, glue the warship to the top of the flight peg.



If the warship was glued to the flight peg, apply some glue to the warship around the flight peg and slide the flight peg topper up against the warship.



Contact Information
www.kalidasia.com
support@kalidasia.com