

# Legends of Kalidasia: Surakari Draco / Delphinus Instructions

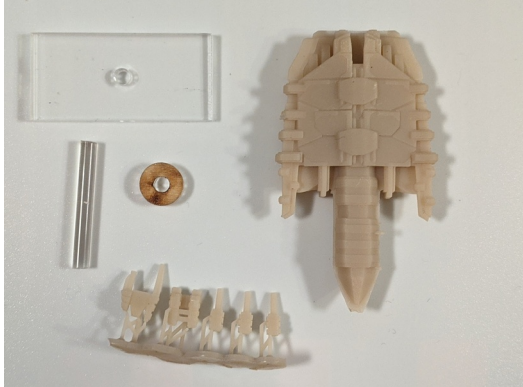
## Box Contents

- One Frigate Hull, Five 3D Printed Weapons
- One 1" Flight Peg, Base and Flight Peg Topper

## Assembly Instructions

Be sure to use proper safety equipment when assembling these figures such as safety goggles. Required tools include clippers, a file, hobby knife, and cyanoacrylate glue.

### Step 1 – Verify Frigate Components



### Step 2 – Clean and Prepare the Parts

The 3D printed components of the Surakari Frigate miniature need to have their support material removed. The hull has most of its support material removed, but there might be a few small thin bits still attached.

The weapons need to have all of their support removed. Consult the image below to see how the weapons should look without their support material

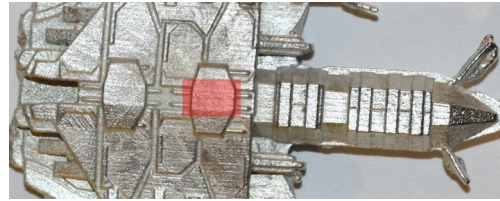


### Step 3 – Assemble the Miniature

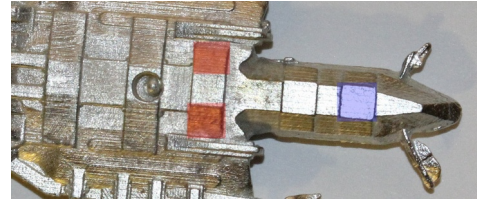
The top of the miniature has one flat space for the Frigate's turret weapon. The Draco(Frigate Prime) uses the dual gun turret. Which is the top turret in the components image. The Delphinus(Anti-Missile Frigate) uses the dual missile launcher turret.

Each of the plasma cannons has a flat bottom which is the side that is glued to the bottom of the hull. The Delphinus only uses the two rear plasma cannon mounts while the Draco uses all three plasma cannon mounts.

## Main Turret Mount



## Plasma Cannon Mounts



## Final Assembly

### Completed Draco Frigate



### Completed Delphinus Frigate



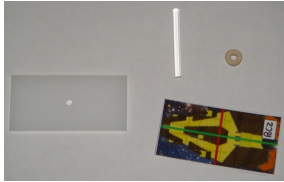
## Base Assembly Instructions

Once the figure has been assembled and painted, they need to be attached to their flight base. It should be noted that depending on your method of figure storage, it may be recommended to not glue the figure to the flight base.

## Assembling the Flight Bases

Each flight base contains a base, a flight peg, and a flight peg topper. The warship tokens are not included in this pack and can be found in the Exterior Fleets. The size of the bases will match the size of the game tokens. Battle Cruisers use the 1.5" flight peg and all other ships use the 1" flight peg. (Please note that figure images used here may not match

the included figures)

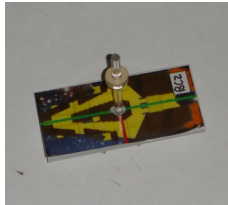


Trim the token down to the size of the base and glue the token to the top of the base.

Punch a hole through the token so that the flight peg can be inserted into the base. The base of the flight peg might need to be filed a little bit in order to fit.



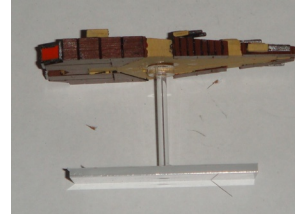
Slide the flight peg topper down the flight peg, but do not glue it in place.



If desired, glue the warship to the top of the flight peg.



If the warship was glued to the flight peg, apply some glue to the warship around the flight peg and slide the flight peg topper up against the warship.



### Contact Information

[www.kalidasia.com](http://www.kalidasia.com)

[support@kalidasia.com](mailto:support@kalidasia.com)

### The New Surakari Frigates

Heragul High Command has no information on the size of the Surakari fleet or even the approximate age of any given warship. From the warship debris which has been recovered from battle, most Surakari warships have an active armor configuration that is very similar to a 500 year old Heragul design. However, this fact does not provide a construction date for a single warship.

In the six month war against the Surakari, the Draco Frigate has already under gone three revisions to improve combat performance. While the second revision looked to just be an upgrade to the first revision, this version looks to be an entirely new design that can outperform all previous versions.

Six months seems real fast to create a new warship from scratch, so it is also possible that this design has simply been held in reserve up to this point. More answers will not be known until Heragul engineers can their hands on one of these warships.

**Game Play Note:** While the Draco / Delphinus Frigate may have longer term stability and performance in a campaign setting, during a game of Legends of Kalidasia, it is treated identical to the current Surakari Frigate Configurations.